



CHADCO

BUILDING • COMMERCIAL PROPERTIES



For Lease Woodberry Park office complex 2929 Crouse Lane, Burlington, NC 27215



BUILDING INFORMATION:

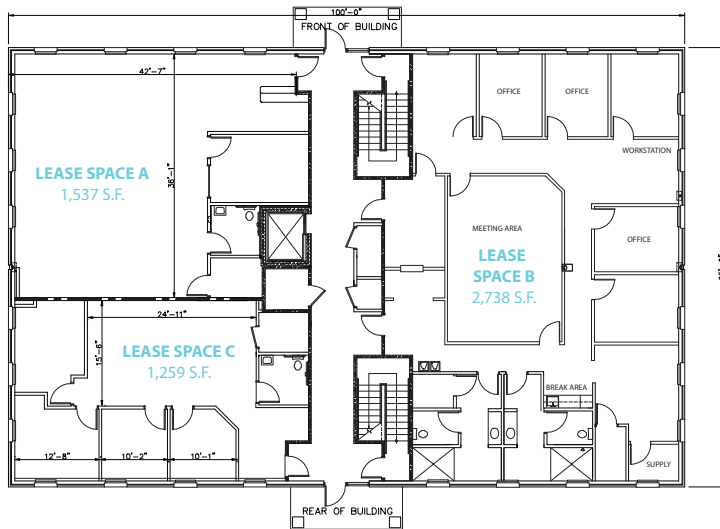
- Located in Woodberry Park office complex
2929 Crouse Lane, Burlington, NC 27215
- Easy access from I-85/40 at Huffman Mill Road
- 1/2 mile from I85/40
- Close to shopping, restaurants and housing
- Adjacent to Alamance Regional Medical Center
- Convenient front door parking
- Two story with elevator
- Move-in ready spaces

LEASE INFORMATION:

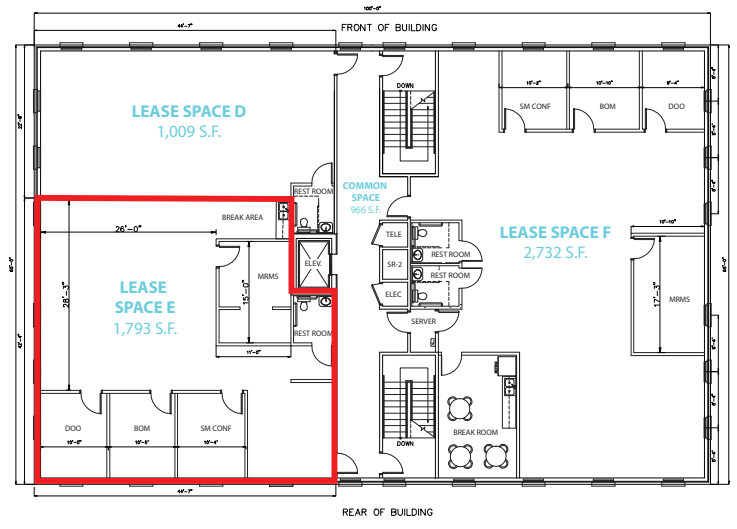
Building Size	Multiple square footages available
Number of Floors	Two story with elevator
Lease Rate	\$21/sf
Lease Term	Negotiable
Taxes, Insurance & Common Area Maintenance	NNN
Tenant Upfit Allowance	Negotiable

First Floor	Suite	Sq/Ft	Monthly Lease
	A	1,537	Leased
	B	2,738	Leased
	C	1,259	Leased
Second Floor	Suite	Sq/Ft	Monthly Lease
	D	1,009	Leased
	E	1,793	\$3,138
	F	2,732	Leased

View commercial lease space at www.chadcobuilders.com
336-516-0428



First Floor



Second Floor



CHADCO
BUILDING • COMMERCIAL PROPERTIES

2004-B Anthony Road, Burlington, NC 27215 PO Box 877, Graham, NC 27253
Office 336-516-0428 Fax 336-297-6586 Mobile 336-516-1324 Mobile 336-516-0428
View commercial lease space at www.chadcobuilders.com